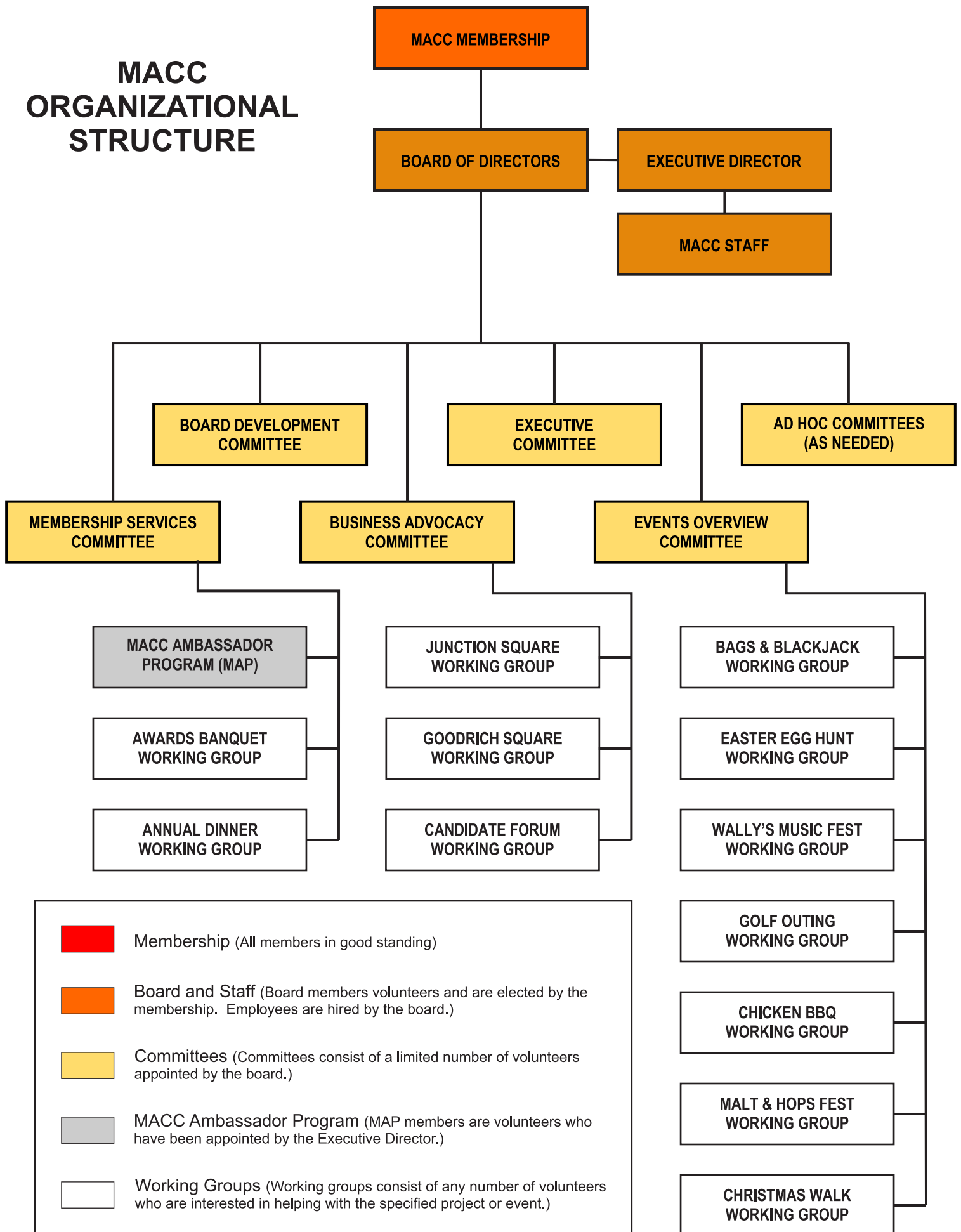


# MACC ORGANIZATIONAL STRUCTURE



Membership (All members in good standing)



Board and Staff (Board members volunteers and are elected by the membership. Employees are hired by the board.)



Committees (Committees consist of a limited number of volunteers appointed by the board.)



MACC Ambassador Program (MAP members are volunteers who have been appointed by the Executive Director.)



Working Groups (Working groups consist of any number of volunteers who are interested in helping with the specified project or event.)